

## Light efficiency:

**106 Lumen/Watt**

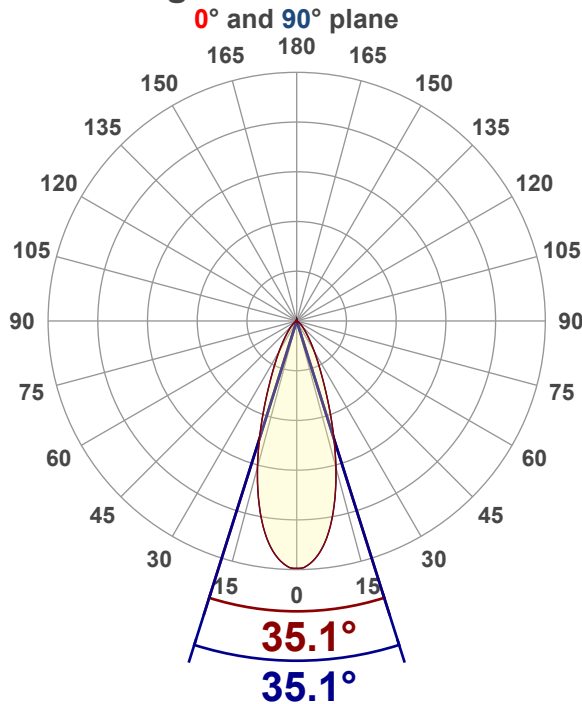
## Color temperature:

**4030 K**

## Light quality:

**CRI:96.9, R<sub>g</sub>:91.2, R<sub>f</sub>:100.0****P: 2 / V: - / F: 2****Output: 1211 lm****Peak: 2605 cd****Power: 11.4 W****Voltage: 120 V****Current: 0.098 A****PF: 0.97****THD: 15.81 %**

## Angular Distribution



Product name:

**RA4-12G-90WH - 4000K**

Test Date:

**12/12/2025**

Beam Angle (50% of the brightness of the centre):

**35.1°**

Field Angle (10% of the brightness of the centre):

**66.9°**

Cut Off Angle (2.5% of the brightness of the centre):

**95.5°**

## Beam Details

\*measured at centre of beam

Mounting Height (feet)\(meter)	Lux*	Footcandles*	Beam width (feet) / (meter)
4 ft / 1.2 m	1752 lx	163 fc	2.5 ft / 0.8 m
8 ft / 2.4 m	438 lx	41 fc	5.1 ft / 1.5 m
12 ft / 3.7 m	195 lx	18 fc	7.6 ft / 2.3 m
16 ft / 4.9 m	110 lx	10 fc	10.1 ft / 3.1 m
20 ft / 6.1 m	70 lx	7 fc	12.6 ft / 3.9 m

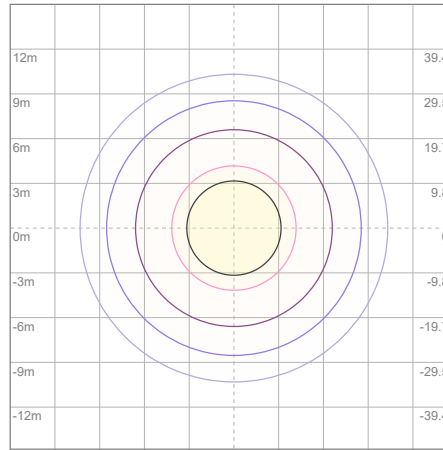
Beam center

# Photometric Testing Report

## Zonal Lumen Summary

Zone	Lumen	%Luminaire
0-30	948	78.28%
0-40	1091	90.09%
0-60	1187	98.02%
60-90	22.3	1.84%
70-100	8.11	0.67%
90-120	0.558	0.05%
0-90	1209	99.83%
90-180	1.74	0.14%
0-180	1211	100.00%

## ISO Lux Diagram



Lux at center:	280 lx
3%	8.40 lx
5%	14.00 lx
10%	28.00 lx
30%	84.00 lx
50%	140.00 lx

### Conditions:

Number of planes: 8

Lux distribution on a surface when lamp is mounted at 3.05 meters from the surface.

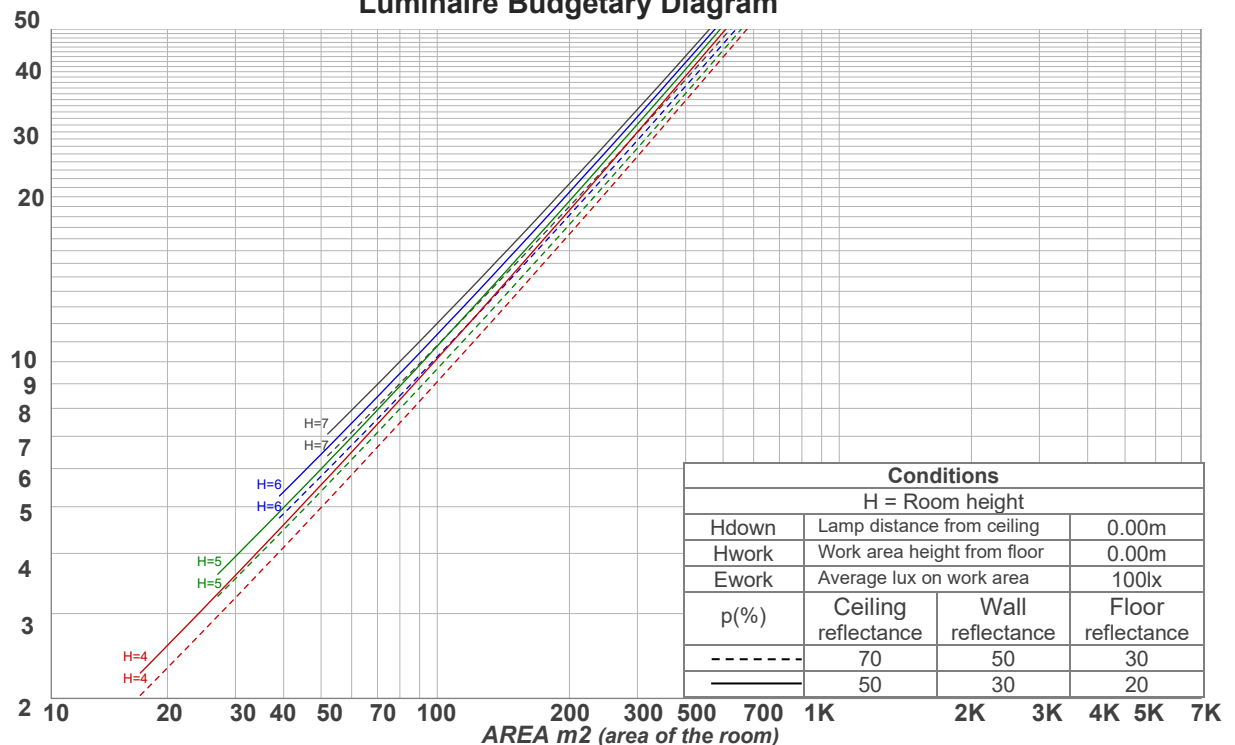
Mounting height: 3.05 meters (10 feet)

## Coefficients of Utilization

Ceiling reflectance	80				70				50			30			10			0
Wall reflectance	70	50	30	10	70	50	30	10	50	30	10	50	30	10	50	30	10	0
Floor reflectance	20	20	20	20	20	20	20	20	20	20	20	20	20	20	20	20	20	0
RCR	(RCR: Room Cavity Ratio) Room Values are expressed as percentage of Lumens delivered to the task surface																	
0	119	119	119	119	116	116	116	116	111	111	111	106	106	106	102	102	102	100
1	114	111	109	107	111	109	107	105	105	103	102	101	100	99	98	97	96	94
2	109	104	100	97	106	102	99	96	99	96	94	96	94	92	93	91	90	88
3	104	98	93	89	102	96	92	88	94	90	87	91	88	86	89	86	84	83
4	99	92	87	83	97	91	86	82	89	85	81	87	83	80	85	82	79	78
5	95	87	81	78	93	86	81	77	84	80	76	83	79	76	81	78	75	74
6	91	82	77	73	89	82	76	73	80	76	72	79	75	72	77	74	71	70
7	87	78	73	69	85	78	72	69	76	72	68	75	71	68	74	70	68	66
8	83	75	69	65	82	74	69	65	73	68	65	72	68	65	71	67	64	63
9	80	71	66	62	79	71	66	62	70	65	62	69	65	62	68	64	62	60
10	77	68	63	59	76	68	63	59	67	62	59	66	62	59	66	62	59	58

LAMPS (number of lamps)

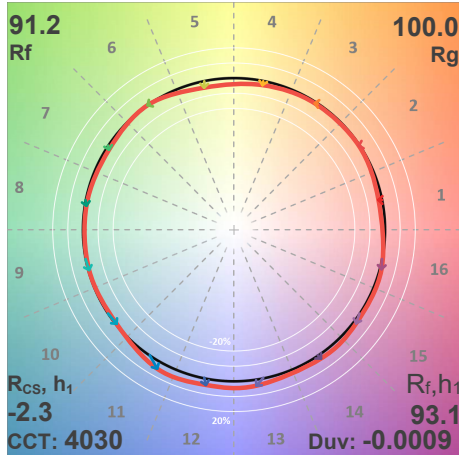
## Luminaire Budgetary Diagram



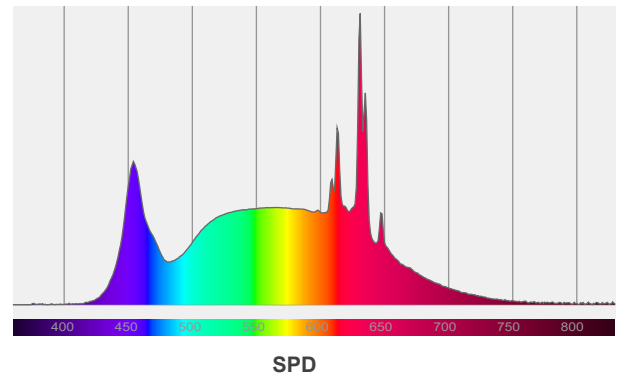
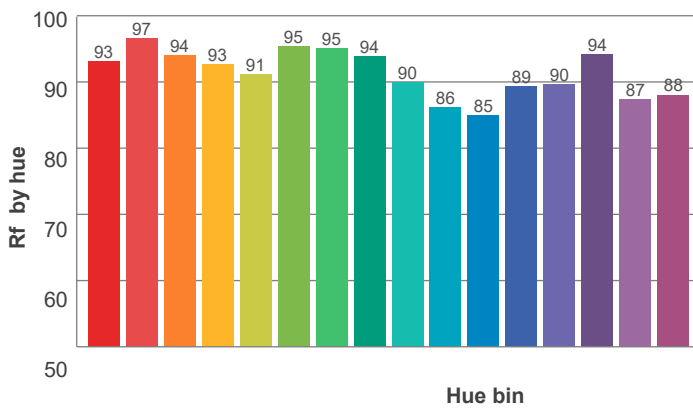
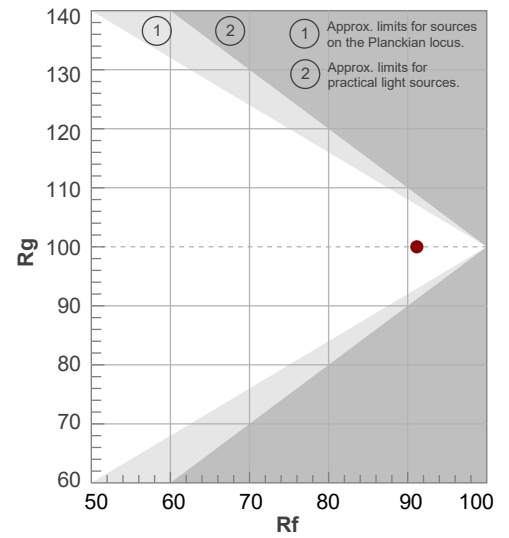
## Photometric Testing Report

ANSI/IES TM-30-18

P: 2 / V: - / F: 2



Hue Bin	R <sub>f</sub>	Shifts (%)	
		Chroma	Hue
1	93	-2%	1%
2	97	0%	0%
3	94	-1%	2%
4	93	-3%	0%
5	91	-4%	1%
6	95	0%	2%
7	95	-2%	2%
8	94	-1%	4%
9	90	-1%	8%
10	86	-1%	9%
11	85	5%	9%
12	89	4%	2%
13	90	4%	-5%
14	94	3%	1%
15	87	2%	-7%
16	88	1%	-7%



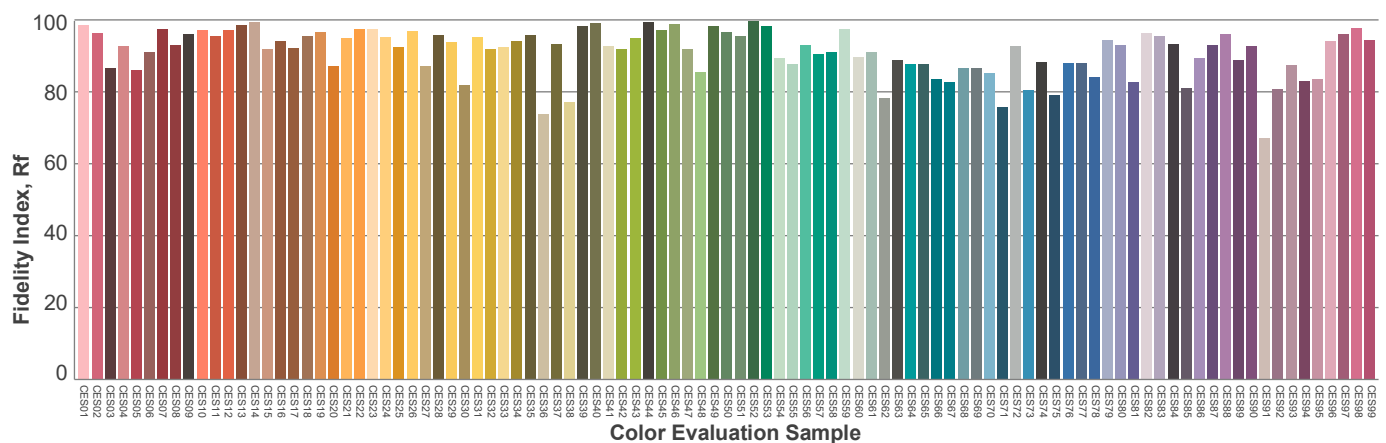
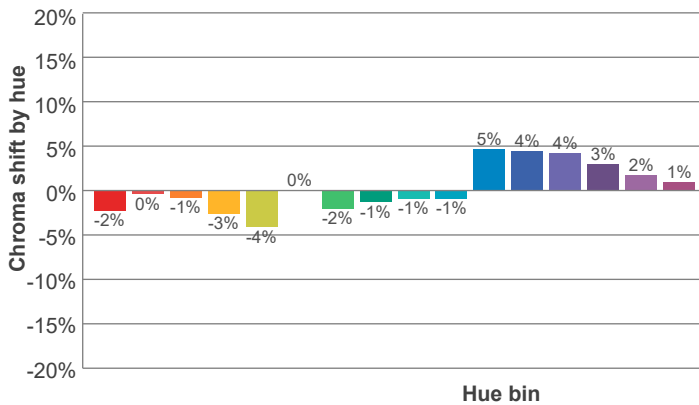
Red: 26.2%, Power=4.9mW

Blue: 15.7%, Power=11.8mW

Green: 30.3%, Power=16.8mW

UVA: 0.1%, Power=0.2mW

Dominant Wavelength: 582nm

1<sup>st</sup> Peak Wavelength: 631nm2<sup>nd</sup> Peak Wavelength: 613nm

## Glare Evaluation According to UGR

p Ceiling		70	70	50	50	30	70	70	50	50	30
p Walls		50	30	50	30	30	50	30	50	30	30
p Floor		20	20	20	20	20	20	20	20	20	20
Room size X      Y		Viewing direction at right angles to lamp axis					Viewing direction parallel to lamp axis				
2H	2H	21.6	22.1	21.7	22.4	22.6	21.6	22.1	21.7	22.4	22.6
	3H	21.6	22.3	22.0	22.5	22.7	21.6	22.3	22.0	22.5	22.7
	4H	21.6	22.3	22.0	22.6	22.8	21.6	22.3	22.0	22.6	22.8
	6H	21.7	22.3	22.0	22.6	23.0	21.7	22.3	22.0	22.6	23.0
	8H	21.7	22.3	22.0	22.6	23.0	21.7	22.3	22.0	22.6	23.0
	12H	21.7	22.2	22.0	22.6	23.0	21.7	22.2	22.0	22.6	23.0
4H	2H	21.4	22.1	21.8	22.3	22.6	21.4	22.1	21.8	22.3	22.6
	3H	21.7	22.3	22.1	22.6	23.0	21.7	22.3	22.1	22.6	23.0
	4H	21.8	22.3	22.2	22.7	23.2	21.8	22.3	22.2	22.7	23.2
	6H	21.9	22.4	22.4	22.7	23.1	21.9	22.4	22.4	22.7	23.1
	8H	21.9	22.3	22.4	22.7	23.1	21.9	22.3	22.4	22.7	23.1
	12H	21.8	22.2	22.3	22.6	23.1	21.8	22.2	22.3	22.6	23.1
8H	4H	21.7	22.2	22.3	22.6	22.9	21.7	22.2	22.3	22.6	22.9
	6H	21.9	22.2	22.4	22.7	23.2	21.9	22.2	22.4	22.7	23.2
	8H	22.0	22.2	22.5	22.7	23.4	22.0	22.2	22.5	22.7	23.4
	12H	21.9	22.2	22.5	22.7	23.3	21.9	22.2	22.5	22.7	23.3
12H	4H	21.7	22.1	22.2	22.5	23.0	21.7	22.1	22.2	22.5	23.0
	6H	21.9	22.2	22.4	22.7	23.3	21.9	22.2	22.4	22.7	23.3
	8H	21.9	22.1	22.5	22.7	23.3	21.9	22.1	22.5	22.7	23.3
Variation of the observer position for the luminaire distance S											
S = 1.0H		2.4 / -2.3					2.4 / -2.3				
S = 1.5H		4.5 / -3.1					4.5 / -3.1				
S = 2.0H		6.3 / -3.8					6.3 / -3.8				
Standard table		n/a					n/a				
Correction summand		n/a					n/a				
Corrected glare indices referring to 1211 lm total luminous flux											